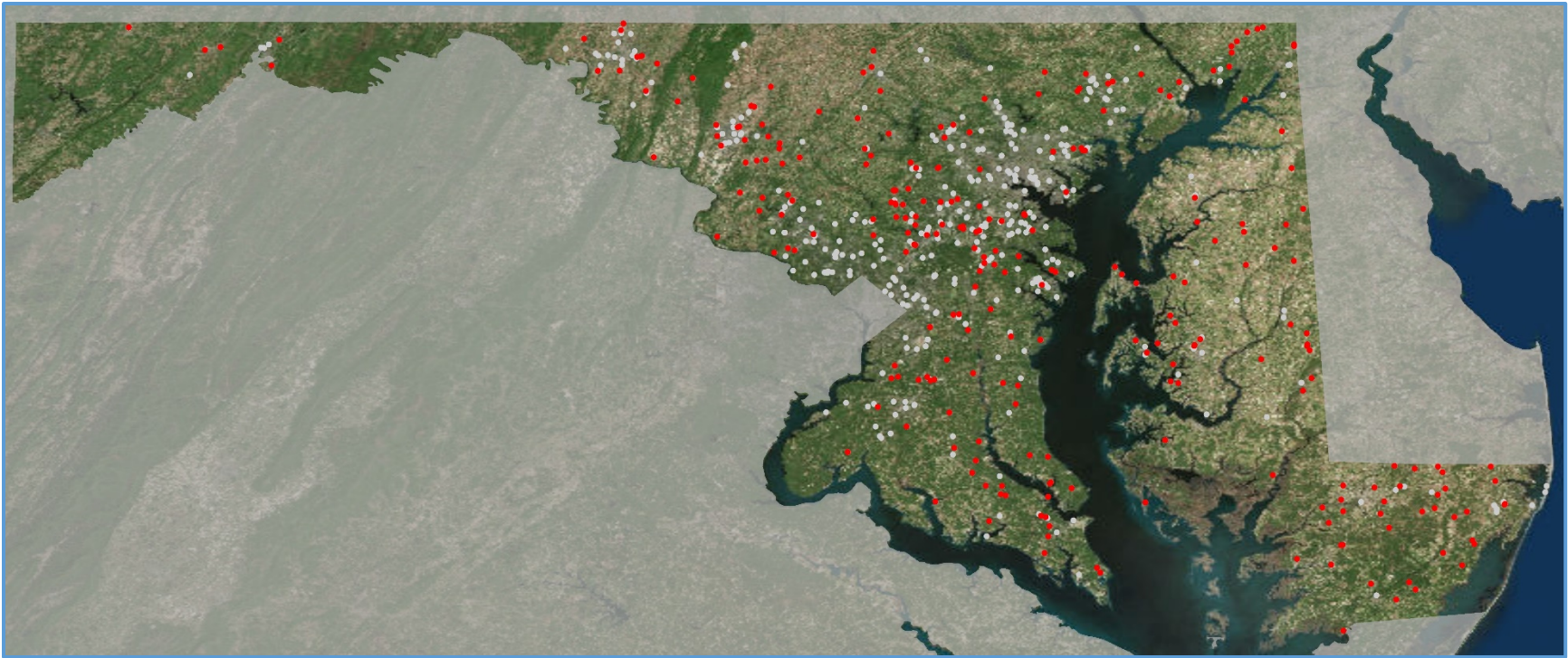
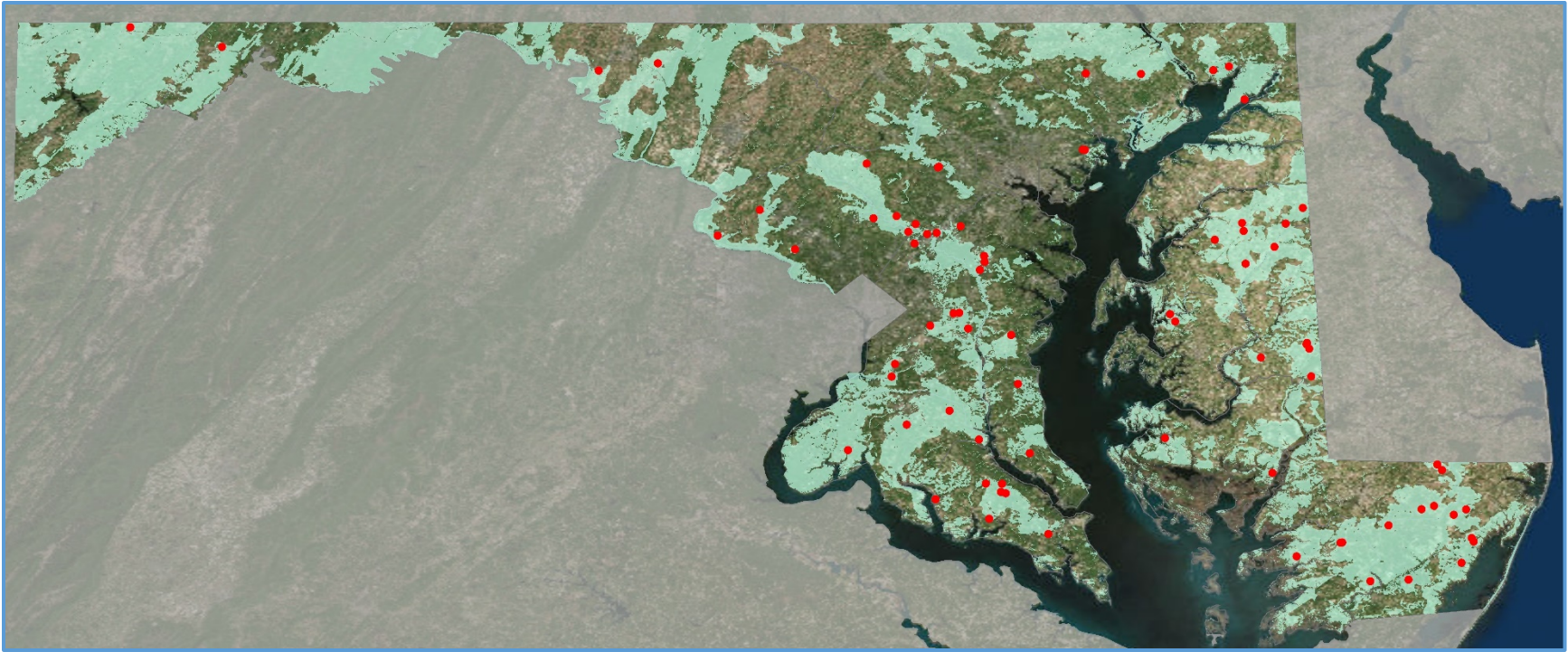


## Large Residential, Commercial, and Industrial Developments Over a One Year Period



Note: Red dots represent residential, commercial, or industrial (including industrial agriculture) development projects (larger than one acre of land disturbance) proposed for development on either forested or agricultural landscapes during a 365-day period between November 2015 and November 2016. Light gray dots are developments not located on forested or agricultural areas, generally “redevelopment” sites.

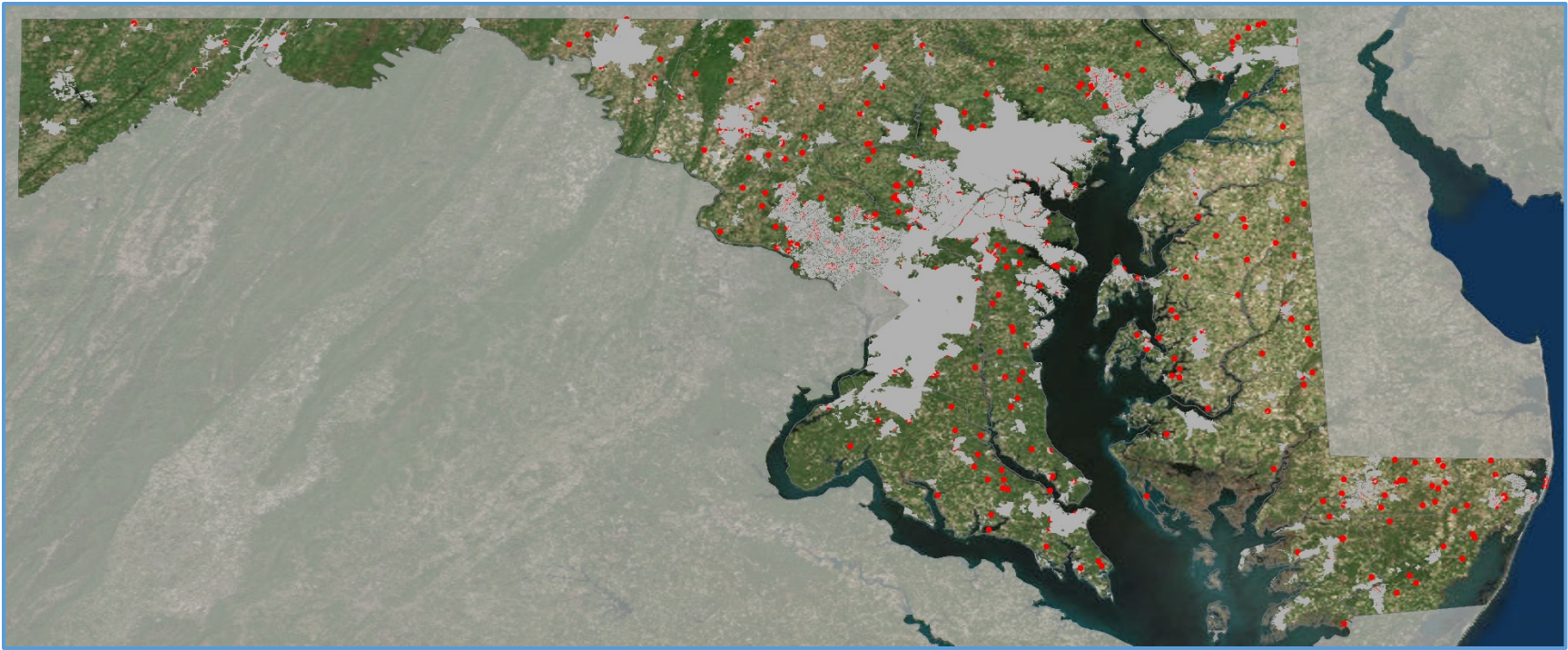
### Projects in Targeted Ecological Areas



Note: Red dots represent development projects (larger than one acre of land disturbance) within state-designated “targeted ecological areas” proposed for development during a 365-day period between November 2015 and November 2016.

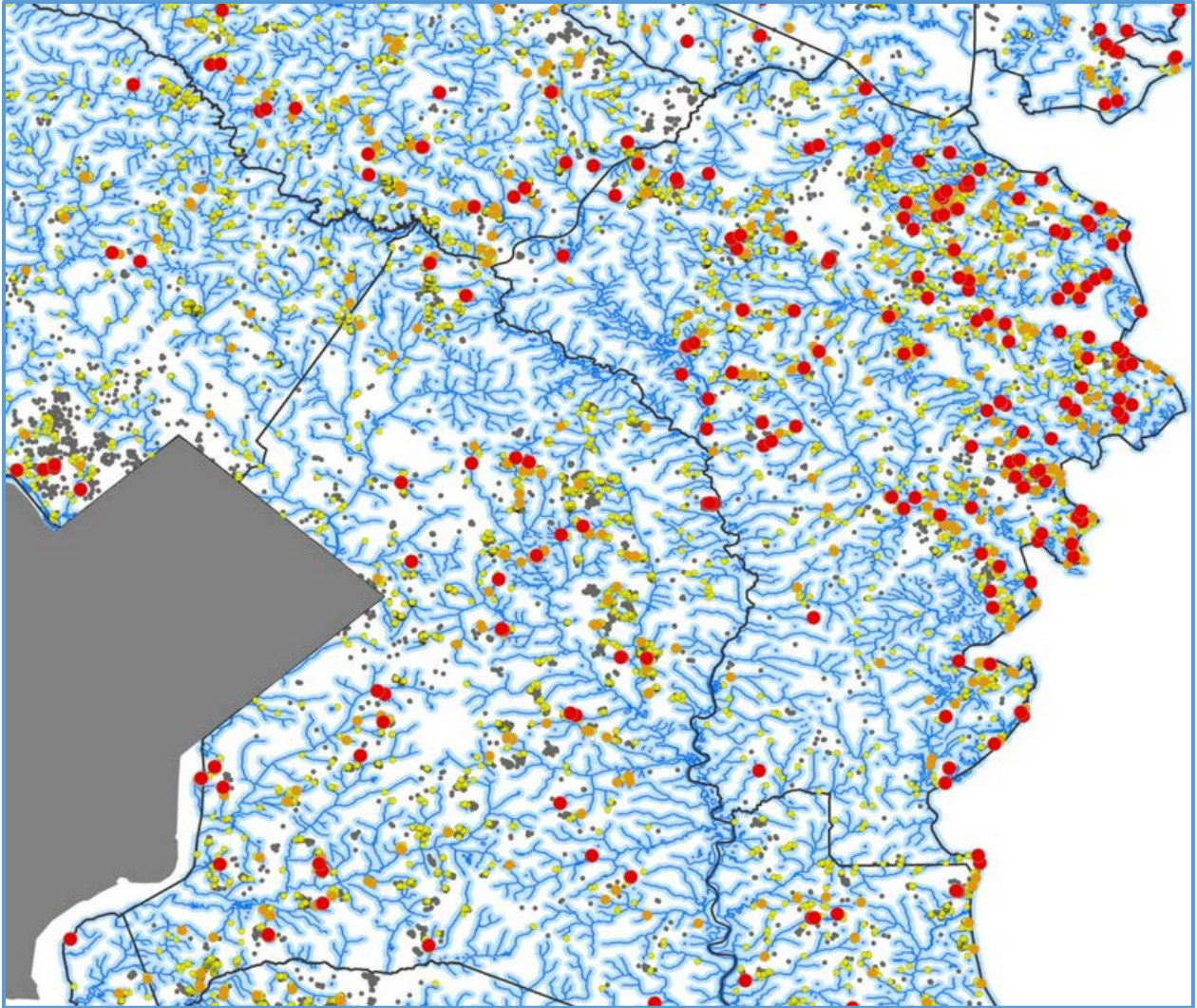


### Projects Located Outside of Existing or Planned Sewer Systems



Note: Red dots represent development projects (larger than one acre of land disturbance) that are outside of the reach of current sewer systems and, in some cases, areas proposed for sewer expansion in the near term. The projects were proposed during a 365-day period between November 2015 and November 2016.

## Development Projects Located in Close Proximity to Streams or the Chesapeake Bay



Note: this map shows developments proposed between November 2015 and November 2016 within differently-sized riparian buffers around streams in Central Maryland. Small gray dots are new developments outside of the largest buffer of 1,000 feet. Yellow dots represent developments within 1,000 feet of a stream; orange dots are developments within 500 feet of a stream; and large red dots are projects within 30 meters of a stream.



### Counties and Watersheds Most Impacted by Development Projects Over 1 Acre in Size

	County	Projects - Percent of Total
1	Anne Arundel County	11.7%
2	Montgomery County	10.7%
3	Prince George's County	10.2%
4	Baltimore County	8.6%
5	Howard County	7.2%
6	Frederick County	5.9%
7	Harford County	4.6%
8	Cecil County	4.5%
9	St. Mary's County	3.9%
10	Washington County	3.6%
	<b>Top 10 Combined</b>	<b>70.8%</b>

	County	Acreage - Percent of Total
1	Prince George's County	14.0%
2	Anne Arundel County	9.4%
3	Frederick County	9.0%
4	Montgomery County	7.3%
5	Baltimore County	6.3%
6	Howard County	6.0%
7	Harford County	5.3%
8	Queen Anne's County	4.4%
9	Cecil County	3.8%
10	Worcester County	3.6%
	<b>Top 10 Combined</b>	<b>69.1%</b>

	Watershed	Projects
1	Little Patuxent River	4.6%
2	Lower Monocacy River	4.6%
3	Anacostia River	4.4%
4	Baltimore Harbor	4.0%
5	Patapsco River L N Br	3.7%
6	Western Branch	3.3%
7	Seneca Creek	3.0%
8	Potomac River MO Cnty	2.7%
9	Patuxent River lower	2.6%
10	Severn River	2.3%
	<b>Top 10 Combined</b>	<b>35.2%</b>

	Watershed	Disturbed Acres
1	Lower Monocacy River	8.1%
2	Anacostia River	4.8%
3	Baltimore Harbor	4.3%
4	Seneca Creek	4.0%
5	Western Branch	3.7%
6	Mattawoman Creek	3.5%
7	Little Patuxent River	3.4%
8	Piscataway Creek	3.3%
9	Manokin River	3.1%
10	Patapsco River L N Br	2.8%
	<b>Top 10 Combined</b>	<b>40.9%</b>

	County	Acres per Project
1	Somerset County	36.2
2	Queen Anne's County	18.1
3	Frederick County	15.2
4	Prince George's County	13.8
5	Caroline County	11.7
6	Worcester County	11.6
7	Harford County	11.5
8	Wicomico County	10.7
9	Dorchester County	10.7
10	Washington County	9.6
	<b>State Average</b>	<b>10.0</b>

	Watershed	Acres Per Project
1	Manokin River	73.8
2	Furnace Bay	37.0
3	Lower Chester River	34.2
4	Bush River	33.2
5	Lower Pocomoke River	29.5
6	Mattawoman Creek	23.9
7	Piscataway Creek	19.2
8	Tuckahoe Creek	18.9
9	Bynum Run	18.3
10	Lower Monocacy River	17.7
	<b>State Average</b>	<b>10.0</b>

## Satellite Images of Pre- and Post-Development Landscapes

Before



After





